

P A R K  
*grandeura*

P a r k l a n d s



Actual Site Photograph



\* Not to Scale



- 1. CLUB
- 2. SHOPPING STREET
- 3. SWIMMING POOL
- 4. KIDS POOL
- 5. ROAD
- 6. ENTRANCE PLAZA
- 7. TENNIS COURT
- 8. BADMINTON COURT
- 9. PARKING
- 10. WATERBODY
- 11. LINEAR WATERBODY
- 12. PATHWAY
- 13. FEATURE PAVING
- 14. VOLLEY BALL COURT
- 15. AMPHITHEATRE
- 16. CHILDREN'S PLAY AREA
- 17. PAVILION



**GROUP HOUSING**  
 FARIDABAD  
**PARKLANDS**

**SITE PLAN**

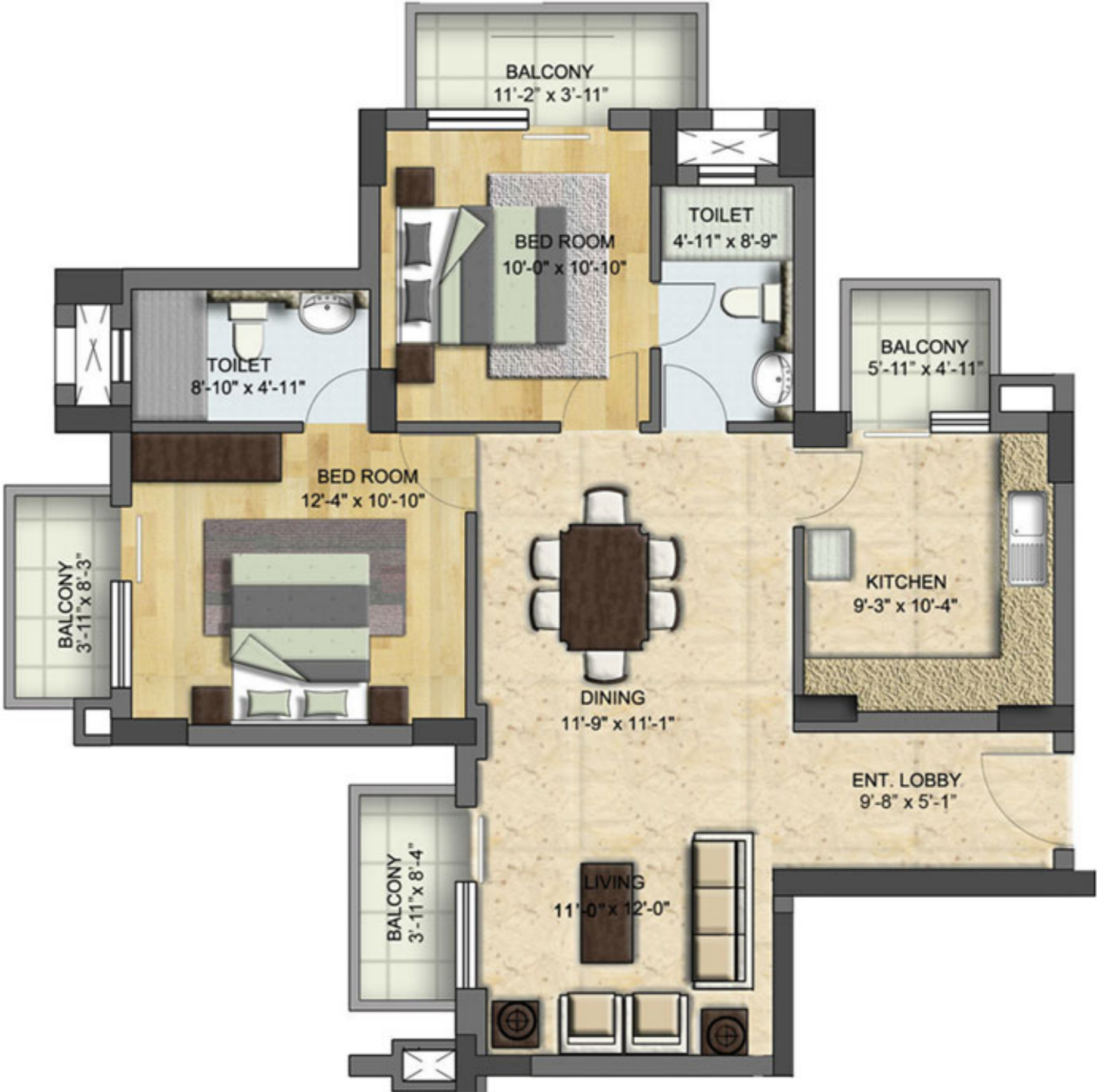
The Architects & Developers reserve the right to make modifications for the improvement of the design

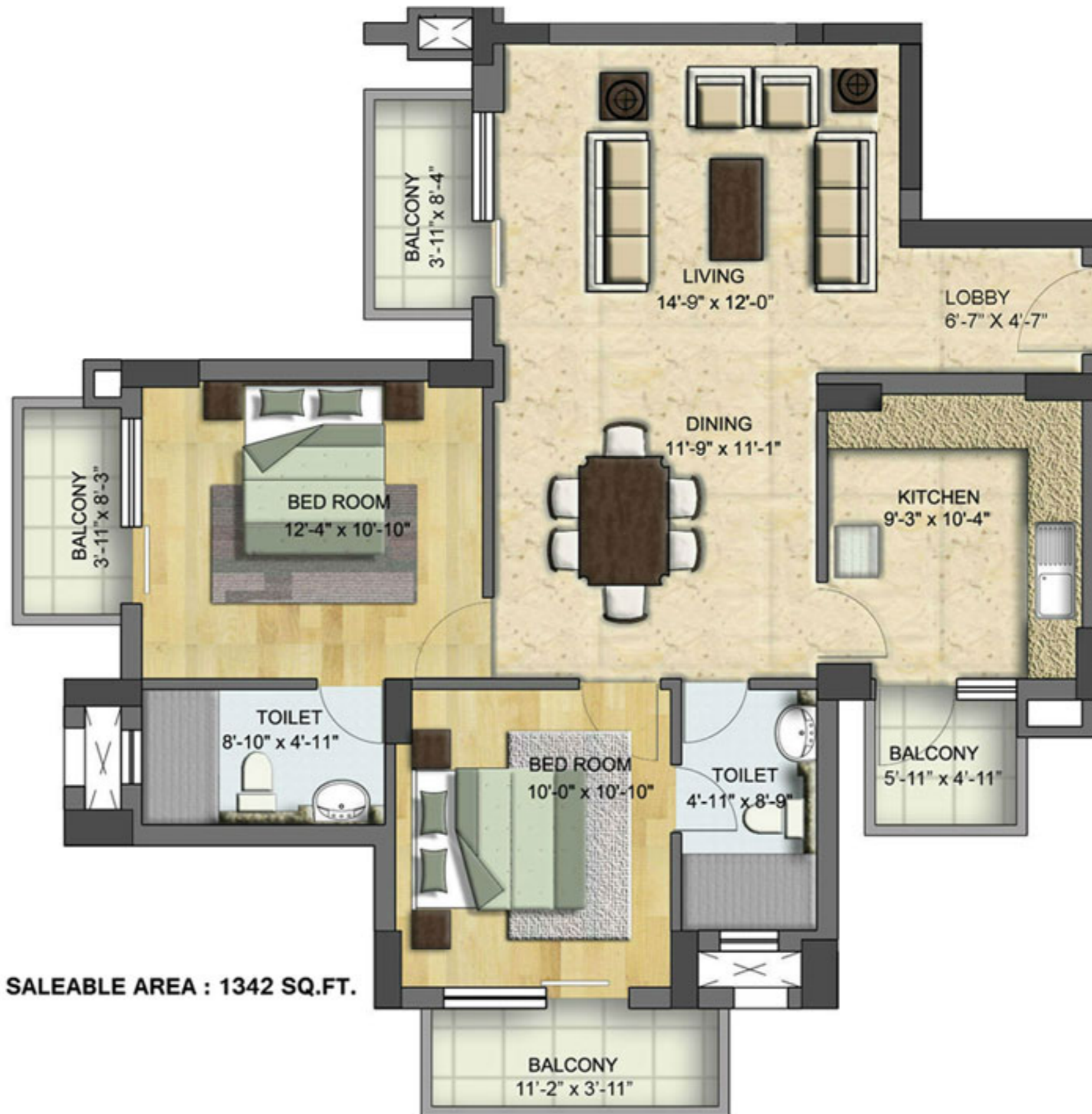


**RKA**  
 RAJINDER KUMAR ASSOCIATES



SALEABLE AREA : 1325 SQ.FT.

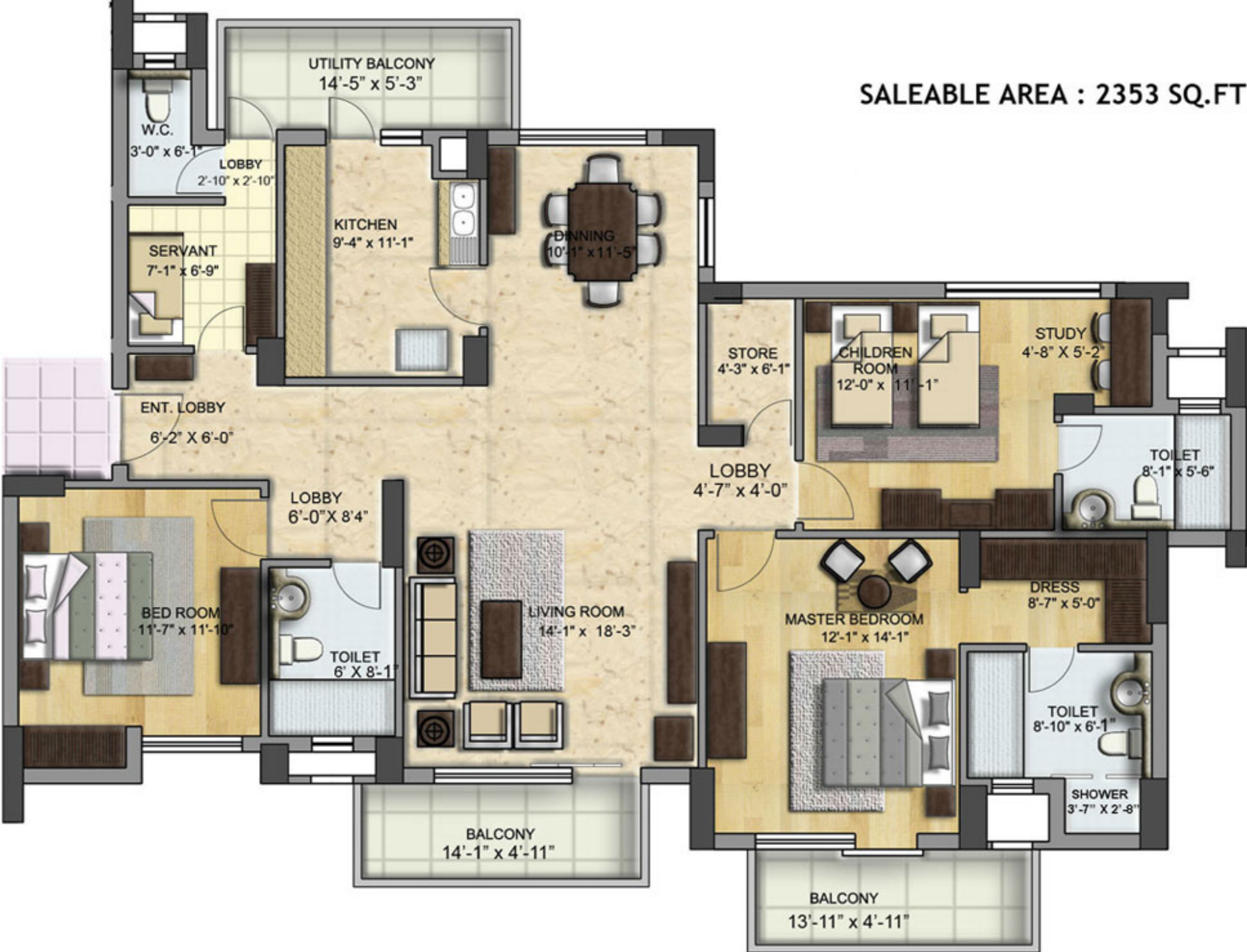




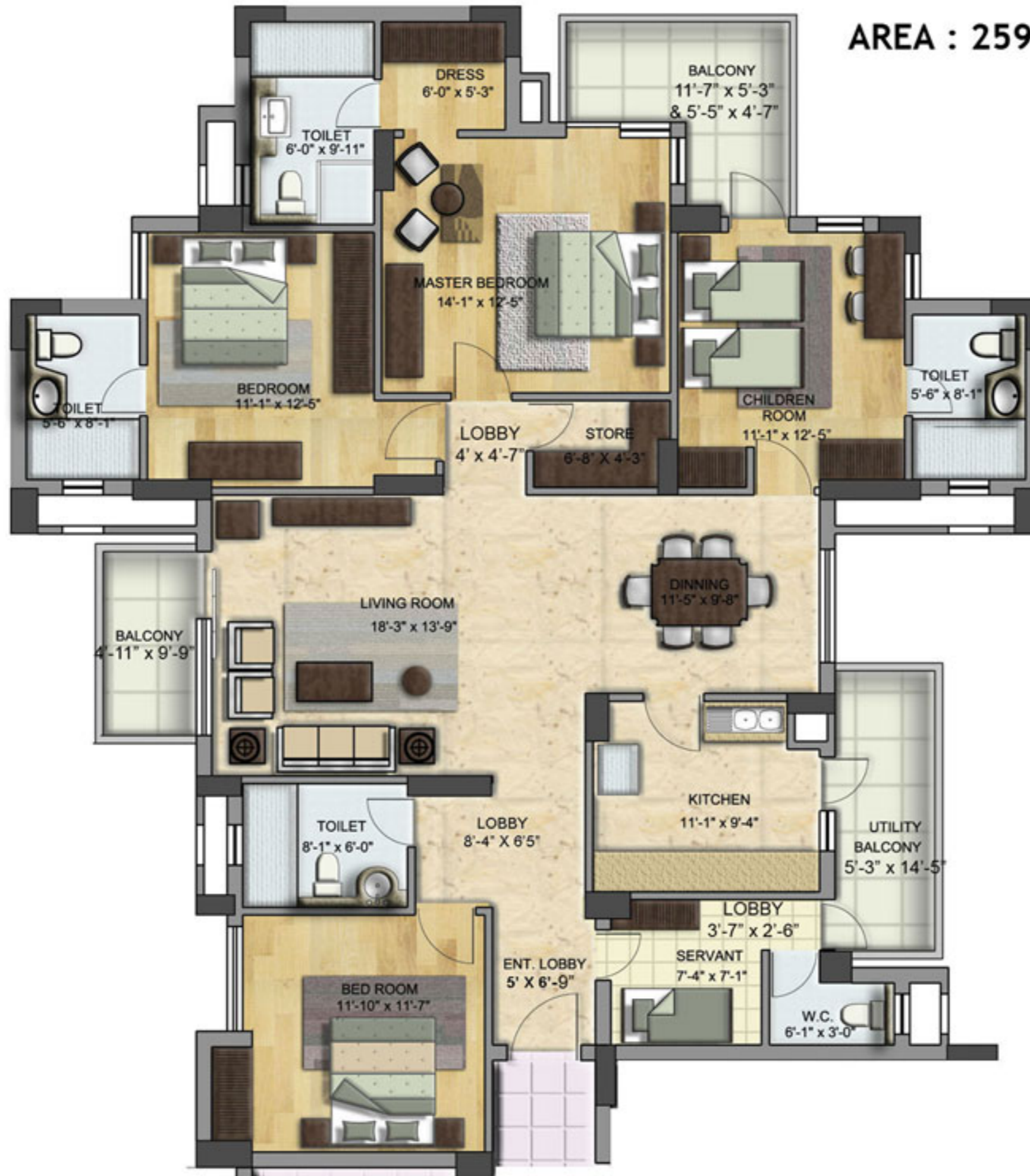
SALEABLE AREA : 2032 SQ.FT.



SALEABLE AREA : 2353 SQ.FT



AREA : 2599 SQ.FT





SALEABLE AREA : 2795 SQ.FT





**SALEABLE AREA: 3745 SQ.FT.**

SALEABLE AREA : 5110 SQ.FT



SALEABLE AREA : 5110 SQ.FT



# SPECIFICATIONS

- **WALL FINISH**

- INTERNAL**

- Living / Dining / Bedrooms - Painted in pleasing shades of acrylic emulsion paint.
  - Servant Room - Painted in oil bound distemper.
  - Lift Lobbies - Selected marble / granite cladding & acrylic emulsion paint.

- EXTERNAL** - Combination of stone & textured paint finish.

- **FLOORING**

- Living / Dining - Vitrified tile with wooden skirting.
  - Bedrooms - Laminated wooden flooring.
  - Servant Room - Ceramic tiles
  - Balcony - Anti-skid ceramic tiles

- **KITCHEN**

- Flooring - Ceramic tiles
  - Dado - Ceramic tiles above working platform, rest acrylic emulsion paint.
  - Platform - Granite counter with double bowl stainless steel sink with drain board & Geysers.

- **TOILETS**

- Dado - Selected ceramic tiles.
  - Flooring - Ceramic tiles / granite / marble
  - Fittings- Granite / marble counter, white sanitary fixtures, single lever CP fittings & Geysers.

- **WINDOWS**

- Powder coated / anodized aluminium glazing.

- **DOORS**

- Seasoned hardwood frames with European style moulded shutters.

- **ELECTRICAL**

- Conduit copper electrical wiring for all light & power points.

- **AIR CONDITIONING**

- Provision of copper conduits and drainage pipes for split air conditioning.

- **FACILITIES**

- 100% power back-up
  - 24x7 security

- **GREEN AREA**

- Fountains
  - Water bodies in the green areas
  - Kids theme parks
  - Jogging and walking tracks
  - Sitting areas

- **BUILDING**

- Sufficient car parking facility per apartment
  - Earthquake resistant RCC framed construction

- **CLUB**

- Swimming Pool
  - Gymnasium
  - Jacuzzi
  - Steam Room
  - Squash Court
  - Tennis Court
  - Indoor Games Room
  - Television Lounge
  - Business Centre
  - Multi-purpose Hall
  - Shopping: Convenient shopping centre